

Spider Placing Boom HD20 R3

HIGH DYNAMIC series

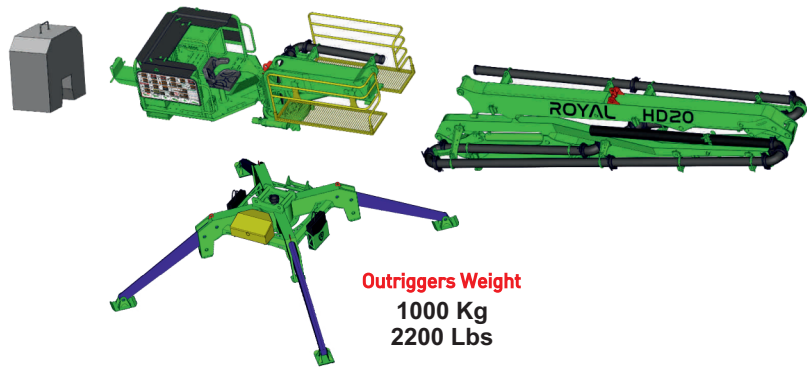
Technical Details

Horizontal Reach	20 M
Vertical Reach	22 M
Working Range	1200 M ²
Machine Weight	4000 KG / 8820 LBS
Ballast Weight	2300 KG / 5070 LBS
Total Weight	6300 KG / 13950 LBS
End Hose Length	3 M
Power / Voltage	7,5 KW, 400 - 480 V, 3 PHASE

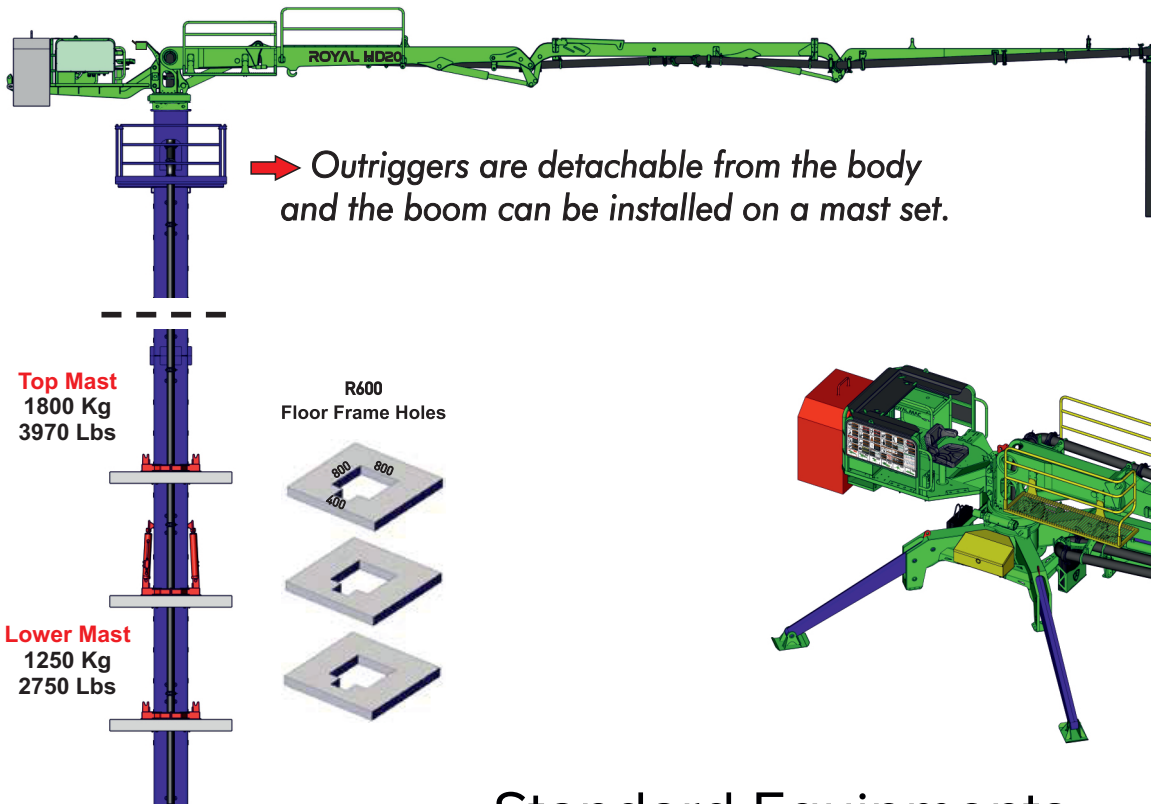
Ballast Weight
2300 Kg
5070 Lbs

Pedestal Weight
1550 Kg
3410 Lbs

Boom Section
1450 Kg
3190 Lbs



Outriggers Weight
1000 Kg
2200 Lbs



Standard Equipments



Radio Control



Proportional Joystick Type
Radio Remote Control



Electric Motor

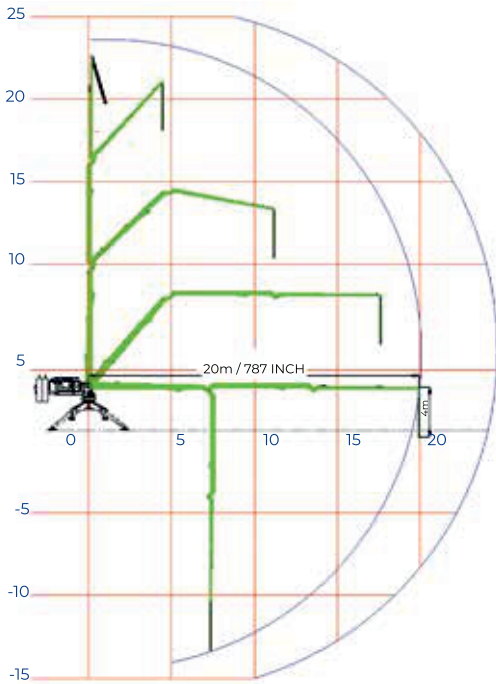


360°

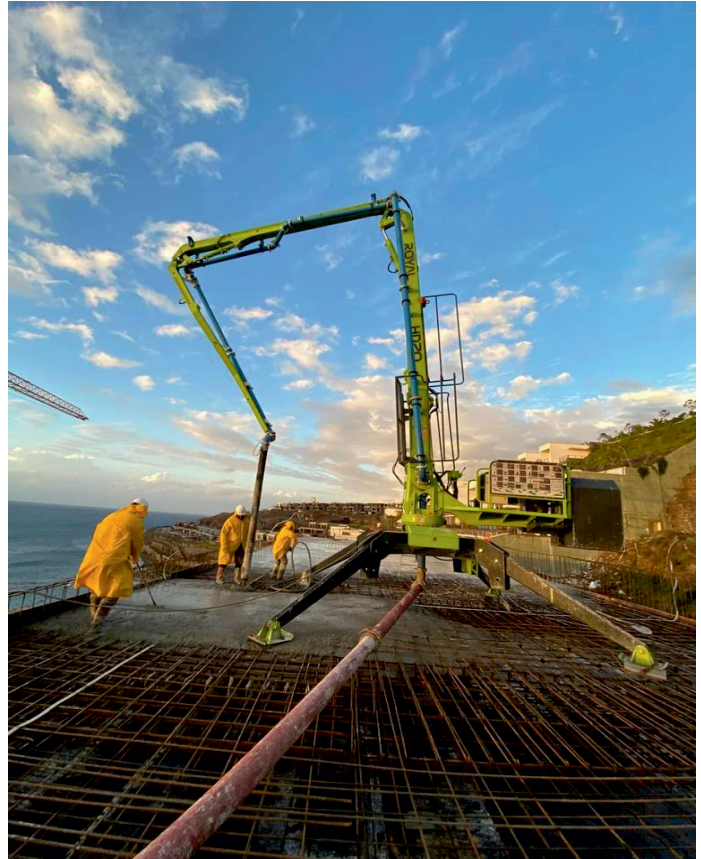
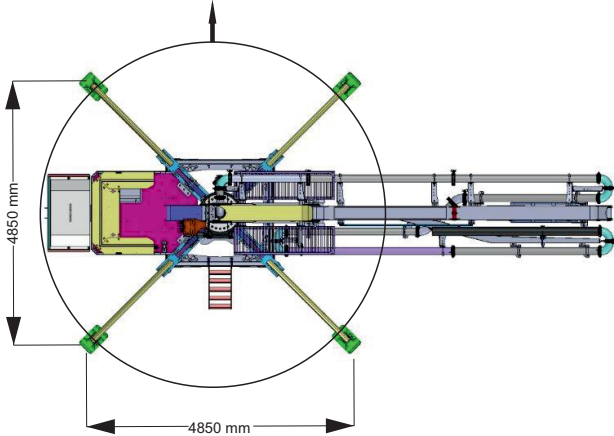


Ballast Weight Steel Case
Mould

Working Range



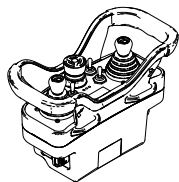
Tail Rotate Diameter 6350 mm



General Descriptions

- HD20 R3 standart usage is on outrigger.
- HD20 R3 can be used with R600 Mast Set as an optional equipment
- Boom sections are made of High strength S700 MC steel and cut buy cnc laser
- Ballast weight steel case mould will be given to be filled with concrete on construction site by your side
- All the pin connection bearings are horizontally milled
- Hydraulic oil pump and connections are located outside the oil tank for ease of diagnose maintenance and service

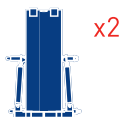
Proportional Radio Remote Control



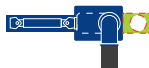
Optional Equipments



Diesel or Gasoline Engine



R600 Mast Set
0.60 m x 0.60 m x 8 m



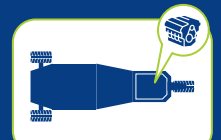
Shut-off Valve



Operator Seat

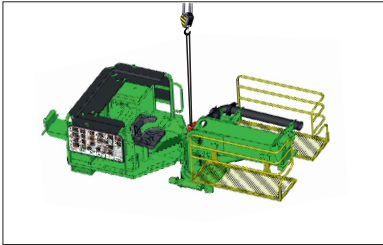


Towable Transporter

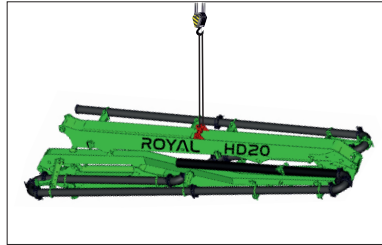


T8 Self Propelled Transporter

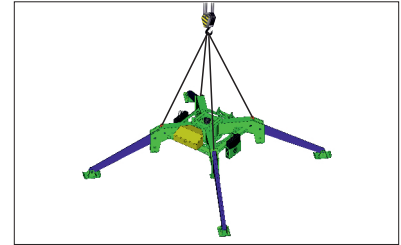
Proportional Split According to Crane Lifting Capacity



Pedestal
1550 Kg / 3410 Lbs



Boom Section
1450 Kg / 3190 Lbs



Outriggers
1000 Kg / 2200 Lbs

Importance of Mechanical Design

- During the process of replacing the boom section, it will not touch the ground and it will be prevented from scratch and corrosion.
- At the process of displacement and installation in construction sites, the part of the machine must save its transport position by itself without any support or jackhorse etc.. by the unity of our design boom section and other groups do not need any support and will not overturn during displacement and installation



More safe and precise control with the proportional remote and hydraulic valve



Ease of Service and Maintenance



Hydraulic oil pump located outside of the tank for ease of diagnose



Boom Section Feet prevents from scratch and corrosion

Origin Of Products Used

 CONCRETE DELIVERY LINE /TURKEY	 FLUID POWER DESIGN HYDRAULIC OIL PUMP /ITALY	 BOOM SHEETS /GERMANY	 HYDRAULIC CIRCUIT PIPES /AUSTRIA
 VALVE BLOCK /TURKEY	 safety remote control RADIO REMOTE CONTROL /ITALY	 ELECTRICAL SYSTEM /FRANCE	 HYDRAULIC SYSTEM OIL /FRANCE
 HYDRAULIC SYSTEM FILTERS /GERMANY	 SLEWING GEAR /SPAIN	 ELECTRIC MOTOR /GERMANY	 SLEWING HYDRO MOTOR /ITALY